



## Silver Line S520



# Silver Line S520, S520S, S520L Technical Data

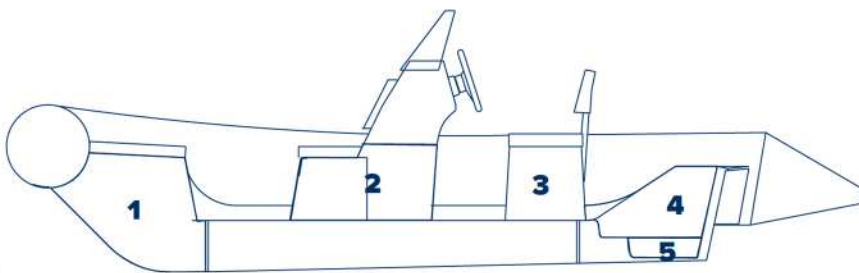
Length overall, cm .....520  
 Width overall, cm ..... 220  
 Length inside, cm ..... 385  
 Width inside, cm ..... 115  
 Tube diameter, cm ..... 50  
 Bare boat weight\*, kg .....225/255/285  
 Transport gross weight\*\*, kg ..... 285/320/350  
 Loading capacity\*\*\*,kg ..... 1000  
 Engine recommended, HP..... 70

Engine max\*\*\*, HP ..... 100  
 Engine weight max, kg ..... 175  
 Engine shaft length, inch ..... 20”(L)  
 Midsection/aft deadrise, degrees ..... 20°/15°  
 Bottom type ..... RIB  
 Boat design category\*\*\*\* ..... D,C

**Remarks:**

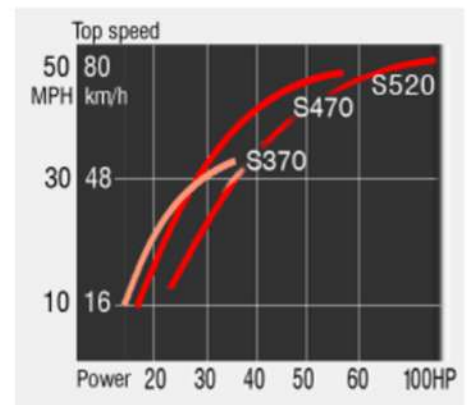
- \* - The bare boat weight is just a weight of the empty boat without any removable accessories.
- \*\* - The transport gross weight is the a weight of the complete boat in standard package.
- \*\*\* - Because of differences of local boatbuilding standarts The Loading capacity and Maximum Engine Power may vary by country. Please check that with your local GRAND dealers.
- \*\*\*\* - Boat design category under European Union Directive 2013/53/EU.

## Compartment Chart

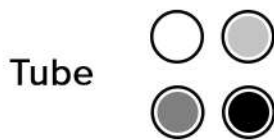


- 1 - Bow locker
- 2 - Console storage
- 3 - Double seat locker
- 4 - Rear open storage volume
- 5 - Water collector

## Performance Chart



Performance data are approximate for boat with light load



### Standard Features

- Extra-Deep “V” molded fiberglass hull with self-bailing cockpit, fuel tank compartment and access cover
- Soft curved multi-chamber inflatable tube
- Molded in high capacity (200 liter) bow locker with access cover
- Towing bow eye, two front and two rear lifting eyes
- Bow grab handle, safety grab handles
- Tough raised rubbing strake with splash guard
- Two paddles and high-efficiency foot pump
- Two cockpit bailers and hull drain plug

### Sport Version

- CS-03 steering console with windshield and handrail
- Steering system with cable and steering wheel

### Deluxe Version

- CL-12 steering console with front seat, seat back, windshield, handrail and two dashboards
- Mechanical steering system with steering wheel
- Rear double seat SD-15 with soft seat backs and lockable stowage

### Optional Equipment

- Removable sundeck
- Built in 90 liter fuel tank with sender and filler
- Complete electric package
- Fiberglass step ends for inflatable tube
- Stainless steel polished navigation arch
- Bow step plate with clam bollard
- Bow locker removable cushion
- Collapsible bimini top
- Overall cover, console cover
- Overpressure valve
- Keel and tube protector packages
- SILVERTEX upholstery upgrade
- SeaDek antiskid set (for DELUXE version)

YOUR LOCAL DEALER

